



ADVANCED
SOLUTIONS FOR
LEGAL PROFESSIONALS

Quickly and Easily Scan Documents Into Your Worldox Document Management System

Paper documents are critical to how your firm practices law each day. Scanning hard-copy pages into a document management system is often a time-consuming, manual, multistep process. Now, **Authorized Send To Worldox v7** enables your staff to quickly and easily send documents to Worldox directly from the touch screen of your imageRUNNER ADVANCE multifunction printer (MFP).

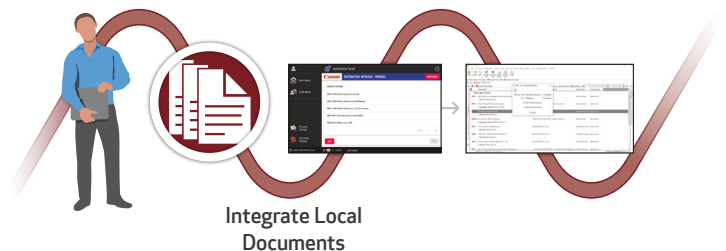


The Value of Authorized Send to Worldox

- Simplify scanning into Worldox
- Integrate legal documents in fewer steps
- Index documents with ease
- Streamline document management
- Boost firm-wide staff productivity

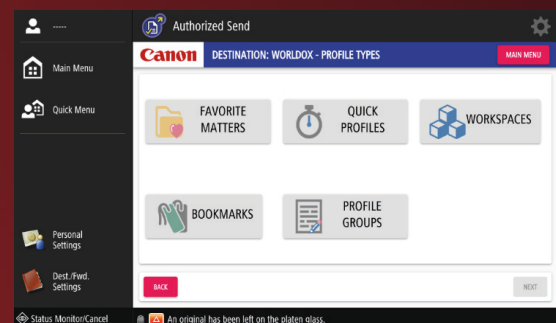
Simplify Scanning Into
Worldox

Index Documents
With Ease



INTEGRATE DOCUMENTS DIRECTLY TO Worldox FROM YOUR imageRUNNER ADVANCE MFP

- To help your firm expedite casework and maximize productivity, Canon collaborated with World Software Corporation to develop **Authorized Send to Worldox v7**.
- Canon built this powerful, embedded application to bring the essence of the Worldox desktop user experience directly to the imageRUNNER ADVANCE MFP touchscreen.
- The familiar user interface will enable your staff to quickly and easily scan and profile documents to Favorite Matters, Quick Profiles, Workspaces, and Bookmarks. The added profiling information makes the documents easier to find in Worldox.



Authorized Send to Worldox v7 brings the essence of the Worldox desktop user interface experience directly to the imageRUNNER ADVANCE MFP touchscreen.

FACILITATE A MORE INTUITIVE USER EXPERIENCE

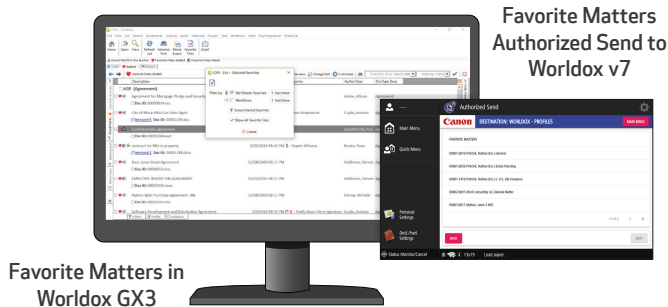
The authentication process helps you maintain security while also maximizing productivity. Once **Authorized Send to Worldox v7** is selected, the application immediately prompts the user to authenticate.

Once authenticated, files associated with the user's existing Worldox profile will appear in the touch screen control panel. That staff member's commonly used matters are presented in a simple list from which the user can easily select the relevant matter.



INTEGRATE DOCUMENTS THE WAY YOU LIKE TO— EVERY TIME

With **Authorized Send to Worldox v7**, your staff has the freedom when scanning documents. The application enables your legal staff to quickly locate the destination to which they'd like to store their files—just like they do at their desktop. Favorite Matters, Quick Profiles, Workspaces, and Bookmarks are all dynamic. These areas can be used to quickly profile and store scanned documents with a minimal number of finger presses.



SIMPLIFY AND EXPEDITE LEGAL DOCUMENT INTEGRATION TO Worldox

The **Authorized Send to Worldox v7** application helps streamline, simplify, and expedite the process of integrating hard-copy legal documents into the Worldox document system. Now users can step up to a Canon imageRUNNER ADVANCE device to quickly scan, classify, and upload case documents to Worldox with confidence.



SYSTEM REQUIREMENTS:

Canon imageRUNNER ADVANCE MFP

- **Authorized Send to Worldox v7** can be installed on any MEAP-enabled, networked imageRUNNER ADVANCE MFP.
- The application needs to be installed by a Canon Authorized Reseller and configured to point to your Worldox GX3 installation.
- An administrator interface will need to be installed on a network PC.

Worldox

- Worldox GX3 and later
- Locally hosted or cloud-based installation
- Worldox Web

For more information about Authorized Send to Worldox visit usa.canon.com/advancedsolutionsforlegal



USA.CANON.COM/ADVANCEDSOLUTIONSFORLEGAL



Canon, imageRUNNER, and MEAP are registered trademarks of Canon Inc. in the United States and may also be a registered trademarks or trademarks in other countries. Worldox is a registered trademark of World Software Corporation. All other referenced product names and marks are trademarks of their respective owners. Some items may not be available at this time; please check for availability. Specifications and availability subject to change without notice. Not responsible for typographical errors.

©2019 Canon U.S.A., Inc. All rights reserved.

1119-VMASWLGL-PDF-TM